

The City of Eastland was created in 1875 by CU Connellee and JS Daugherty. In that same year an election was held to move the county seat of Eastland County from Merriman, just south of Ranger, to the new town of Eastland.

In 1917, oil was discovered in Ranger, just 10 miles east. This discovery set off a boom that has been declared to have saved World War I. The communities closest to Ranger saw a sudden surge in population which created a need for more retail business. These businesses, along with oil related entities, needed space to operate from. Many of the structures in Eastland today are results of that boom.

Eastland has many fine amenities to offer: the historic WPA built city park which boasts a large picnic area, playground, and a waterpark type fun area; the historic Majestic Theatre, showing first run movies each Friday – Monday evenings; the Connellee Hotel & Civic Center is home to the Eastland Chamber of Commerce and the Eastland Community Foundation. The Connellee is available for hosting parties and events for a nominal fee; Lake Eastland is a great place to fish or picnic.



***Eastland is a great Destination Place
for that quick visit or for a lifetime!***



CITY INFORMATION

***Includes Information from:
City of Eastland Utility Departments, Police & Fire
Departments, Cemetery, Code Compliance,
Planning & Zoning, and more***

113 E. Commerce St.
Eastland, TX 76448
254-629-8321
www.cityofeastland.com

CITY GOVERNMENT

The City of Eastland, under Home Rule charter, is governed by a five member, non-paid, City Commission and City Manager form of government.

Monthly meetings of the Commission are held on the third Monday at 6 p.m. in the Commission Chambers located at City Hall. These meetings are open to the public. Agendas are posted online as well as on the front window of City Hall and to local and area media.

Current City Staff members at Eastland City Hall are:

City Manager J. J. Oznick oversees the day to day operations of the City under the direction of the City Commission.

Director of Finance - Leslie Zander oversees the day to day financial operations of the city. Leslie assists those firms who perform audits for the city and is instrumental in the preparation of the Annual Budget.

City Secretary - Roma Holley acts as custodian of all official records of the City Commission, serves as Records Management Officer, Director of Human Resources, City Elections Official coordinating with the County Elections Administrator for all City related elections.

City Registrar - Melissa Cook is responsible for recording all births and deaths that happen within the city limits and making certified copies of these records available to the public.

Planning Official - Tony Stubblefield. Planning and Zoning is responsible for planning the physical growth and development of the city. In order to fulfill that responsibility, the office prepares a revised general plan periodically, updates the rules governing subdivision of property, reviews and revises the zoning laws that regulate the use of property and administers both the subdivision code and the zoning ordinance. This office supervises the Code Compliance Department & performs Plumbing Inspections.

Director of Public Works - Bobby Jacoby oversees the day to day operations of the water, sewer, streets and parks departments.

Utility Clerk - Michelle Riley is usually the first person you meet when coming to City Hall. Michelle is in charge of accepting utility payments and applications. She coordinates orders for new services with the utility departments.

Deputy Court Clerk/Associate Judge - Dena Withers coordinates the Municipal Court operations and receives payments for traffic and code citations. She coordinates with the Court Judge for hearings and the setting of fines.

Code Compliance Officer - Terry Simmons is charged with monitoring the compliance of the City Code of Ordinances by performing inspections throughout the city and issuing notices and/or citations for violations. This department continues to educate the public through the media of the ordinances and how to remain in compliance.



Important Contact Info at a Glance:

ATMOS Energy	800-460-3030
POWER TO CHOOSE	866-797-4839
ONCOR ELECTRIC DELIVERY	888-313-4747
WASTE CONNECTIONS for large roll-off dumpsters	800-687-3390
SUDDENLINK Cable System	866-220-5515
EASTLAND COMMUNITY FOUNDATION 209 W Main	254-631-0708
MAJESTIC THEATRE 108 N Lamar	254-629-1322
EASTLAND MEMORIAL HOSPITAL 304 S Daugherty	254-629-2601
EASTLAND DIALYSIS CENTER 2300 W Commerce	254-629-3600
EMH REGIONAL HEALTH CARE 2314 W. Commerce	254-629-5100
CENTENNIAL MEMORIAL LIBRARY 210 S Lamar	254-629-2281
EASTLAND CHAMBER OF COMMERCE 209 W Main	254-629-2332
EASTLAND ISD 209 W Main (2 nd Floor)	254-631-5120
EASTLAND COUNTY MUSEUM 114 S Seaman	254-631-0437
EASTLAND COUNTY EMERGENCY DISPATCH Non-Emergency	911 254-629-1728

Important Contact Info at a Glance:

City Utilities 113 W Commerce	254-629-8321
Emergency After Hours Water/Sewer	254-629-8232
City Swimming Pool (During Pool Season)	629-8363
Municipal Court	629-8227
City Manager	629-8321
Chief of Police	629-1700
Non-Emergency Fire Department	629-8232
Emergency Help, Fire, Police, Ambulance	911
 Eastland Airport	 629-1588
 Automobile/Voter Registration	 629-2211
1 st Floor, West End Eastland County Courthouse	
Eastland County Appraisal District <u>Property Tax Payments:</u>	
City of Eastland, Eastland, ISD, Eastland County, Eastland	
Memorial Hospital, 102 N. Lamar, Courthouse Annex	629-8597
 US Post Office 411 W. Main	 629-2383
Eastland County Crime Stoppers	629-8477
Eastland County Judge	629-1263
Eastland County JP Precinct 1	629-1088
Eastland County Food Pantry	629-2132
Eastland County Crime Victim's Assistance Ctr.	629-3223
Eastland County Children's Advocacy Center	629-8229
Eastland County Sheriff	629-1774
Texas Child Protective Services	629-3317
Texas Adult Protective Services	629-3317
Texas Dept. of Aging & Disability Services	629-3317
Texas Dept. of Health- Food Stamps/TANF	629-3317
US Dept. of Agriculture Service Center	629-1636
WIC/Outreach Health Services	629-1783
Central Texas MHMR	629-8293
Cornerstone Community Action Agency	325-625-4167
Workforce Solutions of West Central Texas	800-457-5633

CONTENTS

Solid Waste (Garbage).....	4
Water.....	5
Municipal Court.....	6
Waste Water.....	6
Police.....	7
Fire.....	8
Animal Control.....	9
Streets, Parks.....	10
Code Compliance.....	11
City Map.....	16
Planning & Zoning.....	20
Planning & Zoning Map.....	21
Historic Preservation.....	23
Cemetery.....	24
Economic Development.....	26
Airport.....	27
Eastland Centennial Memorial Library.....	28
Eastland Chamber of Commerce.....	28
Bankhead Highway	29
Important Contact Information.....	30

City of Eastland
113 E. Commerce St.
Eastland, TX 76448
254-629-8321 www.cityofeastland.com

SOLID WASTE

Weekly, bi-weekly or daily garbage collection is provided through a contract with Waste Connections and is billed along with city provided water and sewer accounts for residential and commercial addresses located within the city limits. For current garbage pick-up fees go to: <http://www.cityofeastland.com/government/billing-depart.php>. Commercial rates are based on the services selected including the size of the receptacle, number of pick-ups, etc.

Through the WC contract, twice monthly bulk pickup services are offered to customers free of charge.

Bulk Trash items will be picked up on the **1st and 3rd Friday of each month, by appointment only**. You will need to call the City of Eastland **24 Hours before** pick up at 254-629-8321, in order to make arrangements for pick up. Placing items at curbside more than **48 hours** before your pick up date violates City Ordinance Article III, Section 9-19 and 9-21 and may result in a citation being issued. Bulk Trash items are belongings removed from a resident's home or lot as described in the following list:

Sofa or Couch, Table, Chair, Mattress, Box Springs, Stove, Television, Dryer, Computer, Monitor, Refrigerator (Freon removed), AC Unit (Freon removed), Lawn Mower or Lawn Equipment (oil and gas removed), Brush (cut to 4 foot lengths, bundled, tied and each bundle must weigh 50 lbs or less) (limit of 8 bundles per pickup)

No Tires, Oil and Liquids, Paint or Paint Products, Construction Materials, Concrete!

For more information on the Bulk Pickup Services drop by City Hall and pick up a brochure or go to www.cityofeastland.com and click on the Solid Waste Management link.

A City Convenience Center is also available to those residents who have the means to haul away their own bulk and brush items. The Convenience Center is located at S. Halbryan and E. Valley Streets and is open Monday, Wednesday & Friday by **APPOINTMENT ONLY**. You must call City Hall no less than 24 hours in advance to make an appointment. Most items may be dropped off at no charge, **EXCLUDING CONSTRUCTION MATERIALS, WOOD FENCING, SHINGLES, MATTRESSES/BOX SPRINGS, and TIRES. There is a fee for these items.**

For more information on the City Convenience Center, including hours of operation, location, permissible items, pick up a brochure at City Hall or go to www.cityofeastland.com and click on the Solid Waste Management link.



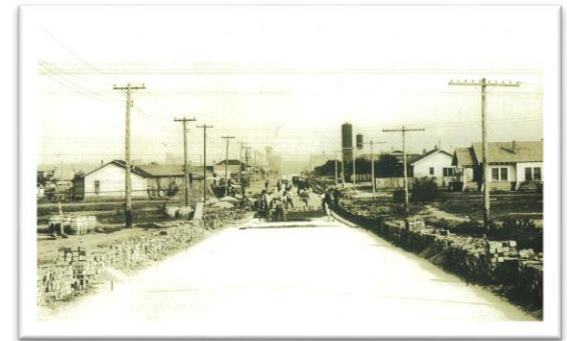
BANKHEAD HIGHWAY



Once known as the Broadway of America, the Bankhead Highway's impact on hundreds of Texas communities -- from colossal cities to tiny towns -- remain evident to this day. Upon completion of the highway in the 1920s, businesses and attractions specifically catering to motorists emerged along the transcontinental roadway, which stretched across Texas from Texarkana to El Paso. Fortunately many of these resources remain intact today.

In Texarkana, the historic route along 7th Street is lined with 1940s, '50s, and '60s motels, restaurants, and gas stations built for those traveling by car. Similarly, in the 1920s, the Bankhead Highway traversed the Deep Ellum neighborhood in Dallas along Commerce Street. Today, the neighborhood retains many of the gas stations, garages, and dealerships dating to that era. In Abilene, South 1st Street contains one of the best collections of historic motels (1930s-60s) along the entire highway's path in Texas.

In smaller towns, the Bankhead often traveled Main Street business districts. Communities such as Mount Vernon in Franklin County, Ranger and Eastland in Eastland County, and Big Spring in Howard County hosted the historic highway, and they retain respectable collections of auto-related businesses dating to the mid-1900s.



Laying Thurber brick westward on West Commerce Street, aka the Bankhead Highway in Eastland

The Bankhead Highway was one of the nation's earliest transcontinental highways. Its beginnings can be traced back to 1916 when the Bankhead Highway Association was organized to promote the highway's development. The roadway extended from Washington, DC to San Diego, California, by way of Alabama, home of US Senator John H. Bankhead and a major supporter of the highway. Its path crossed approximately 850 miles of Texas, passing through Texarkana, Mt. Vernon, Dallas, Fort Worth, Abilene, Midland, Van Horn, and El Paso, among other communities, and roughly followed US 67 and US 80.

The Bankhead Highway has been known by a variety of names. All or parts of this roadway have been known or designated as SH 1, SH 1A, Broadway of America, US 67, US 80, US 80A, US 180, IH 10, IH 20, and IH 30. Nonetheless, one aspect of its history has remained constant since its creation; the highway has been one of the most important transportation corridors in the state's history and it continues to play an important role in its economy and future development. Many segments continue to serve interstate tourists and commercial traffic, while other sections now cater to a more localized market. The associated built environment reflects this rich history. While some of the buildings and structures continue to be used in their original capacity, others have been repurposed, abandoned, and even demolished. The survivors represent a rich legacy in the history of the state and highway transportation.

-Texas Historical Commission

CENTENNIAL MEMORIAL LIBRARY

The Women's Club of Eastland established a library for the city in the early 1900's in the basement of the Texas State Bank building (now the Eastland County Museum). The library moved to 105 West Plummer St. and later to its present location at 210 S. Lamar. The library not only has books for reading but also a genealogy department and online computers for research, employment search, etc.

The Library is a not for profit organization and is funded through state and federal grants, fundraisers, bequests, and the City and County of Eastland. The

Library gladly accepts monetary donations.

For more information stop by or call 254-629-2281.



WATER

The City of Eastland offers residential and commercial customers treated water through a contract with the Eastland County Water Supply District.

For the current fees for water go to:
<http://www.cityofeastland.com/government/billing-depart.php>.

NEW ACCOUNTS:

To establish a water account residents must appear in person at City Hall and fill out an application, provide a copy of their Texas Driver's License, and pay a non-refundable connection fee plus a deposit. The deposit will be refunded when the account is closed in good standing. Any past due bill at the time of closing will have the deposit deducted.

Customers who receive three (3) Disconnect Notices in a 12 month period will be required to pay an additional deposit amount.

Construction sites requiring new water taps and meters are required to pay all fees up front before taps/meters are installed. Meter fees are based on the size of meter required. These fees will be made available at the time the Water Service application process is completed at City Hall.

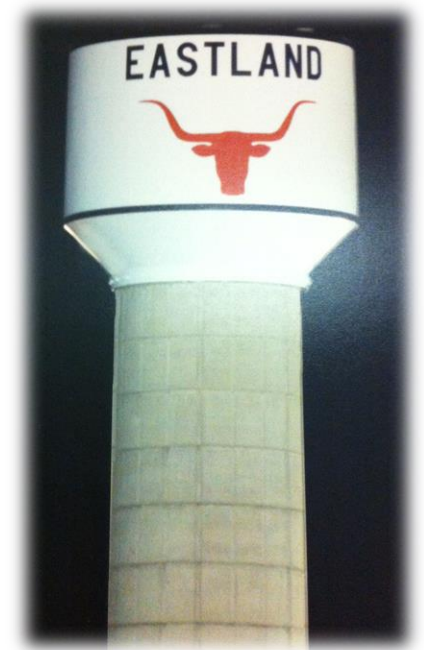
Each month the city mails out utility bill cards. These cards detail the amount of gallons of water used for the previous month and the charges, along with wastewater (sewer) and garbage collection fees. These bills are due on the 20th of each month and become past due on the 21st of the month. 10% late charges are added to any account not paid in full by the 20th.

The City offers electronic funds transfers (Draft) from checking account as well as average billing. Check with City Hall for details.

All habitable, residential addresses are required by city ordinance to be connected to the city water and sewage systems.

For after-hours emergency water leaks

629-8232



EASTLAND CHAMBER OF COMMERCE

Your Chamber of Commerce is a voluntary partnership of business and professional people working together to build a healthy economy and to improve the quality of life in Eastland, Texas.

The Eastland Chamber of Commerce helps to create and sustain the environment for businesses to thrive, grow, add jobs and drive our economy, partnering with the Eastland Economic Development Inc. and the City of Eastland to assist with services to help new businesses open, business retention, and tourism to our city;

The mission of the Eastland Chamber of Commerce is to perform services for existing businesses, enhance the quality of life, promoting and representing the agricultural, civic, commercial and industrial interests of Eastland County.

The Chamber helps to create job opportunities by stimulating industrial and commercial growth; Seeks the improvement of community facilities, such as streets, highways, parks, and schools; Brings sales meetings and tourist activities to the area; Provides the opportunity for members to network with other business leaders and attend business education seminars.

In all of these functions, the Eastland Chamber of Commerce serves as a partner to every business and professional in the community.



**209 W. Main Street
254-629-2332**

Proudly Serving Eastland Since 1921

WASTEWATER

Wastewater is treated at the City Wastewater Treatment Plant located in the southeast portion of the city.

Current fees charge can be found at:
<http://www.cityofeastland.com/government/billing-depart.php>

Sewer tap charges are based on several factors; including, if the street is paved, if the tap crosses a street, etc. To get an accurate fee amount a request must be made at City Hall with these and other details included.

All habitable, residential addresses are required by city ordinance to be connected to the city sewage system. Septic systems are not allowed within the city limits.

For after-hours emergency sewer issues 629-8232

5

MUNICIPAL COURT

The City of Eastland Municipal Court handles cases filed through traffic and other criminal citations issued by the Eastland Police Department and Code Compliance Department. The Court is manned by a full time Deputy Court Clerk and by a visiting Judge.

To speak directly to the Court Clerk call 254-629-8227.

Citations may be paid in person at City Hall, by phone 254-629-8321, or online at:



AIRPORT

The Eastland Municipal Airport is located at 500 Joe Beaty Drive and offers a 5,001 foot runway, auto fuel card system, hangar space and courtesy car.

In 2015 a new terminal was constructed and in 2017 an AWOS system was installed in joint efforts between the City of Eastland, Texas Department of Transportation Aviation Division and private donors. Game fencing to protect aircraft was installed in 2019. For Airport info call 254-629-1588.



ECONOMIC DEVELOPMENT



Our Vision for Eastland

To be a community experiencing positive growth through improved economic and job opportunities, increasing community wealth, while enhancing the quality of life for all citizens.

Our Mission

To facilitate the creation of new and better jobs and enticing capital investment, while diversifying the tax base.

Building Eastland's Future

In 1989, the Texas Legislature amended the Development Corporation Act of 1979 by adding Section 4A, which allowed the creation of development corporations that could be funded by the imposition of a local sales and use tax

dedicated to economic development.

The Eastland Economic Development Corporation (EEDI) was established and authorized by the Eastland City Commission immediately following the August 1993 passage of a one-half of one-percent sales tax dedicated to economic development by the citizens of Eastland. EEDI was also incorporated in 1993 as a not-for-profit, tax-exempt Texas Corporation, which is a separate entity from any other Board or Commission of the City of Eastland.

In accordance with state law, a five-member Board of Directors appointed by the City Commission governs the EEDI. The EEDI meets in regular session monthly to conduct the business affairs of the Corporation. The Board meetings are subject to both the Open Meetings Act and the Open Records Act. Directors serve without compensation and may be removed by the City Commission at any time without cause.

The officers of the Corporation include a President, Vice-President and a Secretary/Treasurer. The EEDI employs an Executive Director to manage the day-to-day business affairs of the corporation. The EEDI Articles of Incorporation state the purpose of the Corporation is the promotion and development of new and expanded business Enterprises to provide and encourage employment in furtherance of the public welfare. The Corporations by-laws establish the authority and responsibilities of the Board of Directors and Officers.

The Corporation's fiscal year is October 1 to September 30. The Corporation adopts an annual budget that is approved by the City Commission. Corporate funds are maintained in separate accounts from City funds. The EEDI Board of Directors approve all expenditures of the Corporation. An accounting firm selected by the City Commission conducts a financial audit of the Corporation's funds and records annually.



POLICE

The Eastland Police Department provides around the clock protection to ensure all families will receive the help it needs in the fight against crime.

Eleven (11) full-time certified Police Officers are the most visible, but the Department also provides specialized units to address specific crimes and community issues. As stewards of the public trust, the personnel of the Eastland Police Department have committed themselves to the goals of delivering the most proactive, responsive and professional police services available, while maintaining a positive customer service attitude. We take pride in and strive to ensure that we live up to our motto.....

'Courtesy, Dedication and Professionalism'....each and every day.

BUSINESS OFFICE 629-1700

EMERGENCY 911

Dispatch 629-1728

With the CodeRED Emergency Notification System the City of Eastland now has the ability to notify the entire City or only the affected areas of the City about emergency situations in a matter of minutes. The system is available to all Eastland residents free of charge.

The CodeRED system delivers pre-recorded emergency telephone messages to affected areas, or the entire City, at a rate of up to 60,000 calls per hour. Examples of times when the CodeRED system may be utilized include



severe weather, Homeland Security related emergencies, hazardous materials emergencies, drinking water contamination and other emergency situations where rapid and accurate notification is essential for life safety.

Keeping citizens informed.

To make sure that we have the most up to date information, we are asking that you visit the CodeRED update site on the www.cityofeastland.com page to update your information. It is ok to update your information even if you have had the same address and number for several years. This will allow us to make sure the information is correct. You may list landline, cellphone and business telephone numbers.

FIRE DEPARTMENT



Fire Protection for the City of Eastland is provided through a department consisting of three paid firemen and a volunteer program of approximately 25 members.

Supported through a combination of City tax dollars, volunteer fundraisers and citizen donations, the department purchases or builds all of the equipment housed at the Eastland Fire Station.

The Volunteer Department, a not for profit organization, seeks interested and qualified citizens to serve. If you are interested, speak with a fireman or visit the station at 414 S. Seaman.

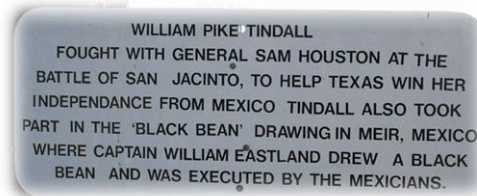
NON Emergency 629-8232

For EMERGENCY HELP Dial

911

Cemetery Continued

of



W.P. "WILLIAM PIKE" TINDALL, born March 4, 1818, died November 25, 1901. He came to Texas in January of 1836 at 17 years age and turned 18 shortly after arriving from New

Orleans. He joined with Sam Houston and fought at the battle of San Jacinto. He was part of the MIER MEXICO expedition and the BLACK BEAN drawing that saw Captain William Eastland, who the city and county of Eastland is named for, die.

Tindall spent two years in a Mexican prison after the Black Bean drawing. He moved back to Alabama and served for 6 months in the Civil War with the C.S.A. He held county offices in Alabama before returning to Texas and settling in Eastland, Texas.

H.S. "HENRY" SCHMICK, NO DATES. First Sheriff of Eastland County and served with Co E. Arkansas Inf. of the C.S.A. He and his two brothers helped to map out the streets of the city of Eastland in its beginnings.

JESSE W. HARBIN, born March 3, 1820, died October 30, 1904. He was in the 1st Alabama Infantry during the Mexican War and was in the Co 1, 23rd Reg Ga. Inf C.S.A. during the Civil War. He has both military stones one at his head and one at his feet.

GEORGE M. REYNOLDS, born May 28, 1846, died March 2, 1937, was a member of the UNION FORCES during the CIVIL WAR, with Co G, 3rd Ark Cav. He was probably part of the "MOUNTAIN TROOPS" from Arkansas that did not want to be part of the Confederacy and hid in the Arkansas mountains and later joined the Union Forces.

A Cemetery Directory is located at the front gate and online, to help you find the grave you are looking for at: <https://cityofeastland.com/government/city-cemetery.php>

In 2005 a War Memorial was established with monuments depicting the wars seen by Eastland Countians including the Civil War, Korean War, World Wars I & II, the Vietnam Skirmish and more. These are located at the front entry with the flag poles flying the American, Texas and Confederate flags.

Just up the road from the War Memorials sits the huge concrete Cross which stood at the Church of God's Camp Inspiration, on the western edge of town for many years.

After the camp closed and the property sold, this monument was transported to the Cemetery in 2005.

For Cemetery information contact City Hall 254-629-8321.



CITY CEMETERY

The Eastland City Cemetery is more than just the final resting place of loved ones and their memories, evident by the daily visits of family and friends.

The cemetery is also a place of historic resources, a reminder of early settlement patterns, religions, lifestyles and genealogy.

The cemetery has many war veterans, early settlers, politicians, officers of the law, and even those who went against the law. Names on grave markers serve as a directory to these early residents and even reflect the ethnic diversity and uniqueness of the population.

Grave marker designs and cemetery decorations represent a variety of cultural influences that helped shape the history of Texas.

The following are just a few of those who helped settle Texas and Eastland and are buried in the Eastland City Cemetery:

CHARLES ULRICH CONNELLEE, born 1851, died 1930. Founder of Eastland. Mr. Connellee, along with partners J.B. Ammerman and J.S. Daugherty, laid out the court house and city streets and had the county seat moved from Merriman to Eastland, as the city was named for the county.

JOSIAH G. "DOC" SCURLOCK, born January 11, 1850, died July 25, 1929. Doc rode with BILLY THE KID during the Lincoln County War in New Mexico. Josiah was born in Alabama and studied medicine, earning him the nickname "Doc". He later moved to New Mexico and hired on as a cow hand with an English nobleman cattle rancher named John Tunstall. Another of the more famous cow hands was Mr. William H. Bonney, better known as "Billy the Kid".

Mr. Tunstall was murdered and thus started the Lincoln County War of New Mexico. After the end of the Lincoln County War, all involved were given a pardon by the governor, except for "the Kid". "Doc" gave away his guns, except for a squirrel

gun, sold a gold mine for \$500.00 (later sold for \$75,000.00) and moved his family to Tuscosa in the Texas panhandle. Later, he and family moved to Eastland, Texas where "Doc" lived until his death in 1929.

"Doc" didn't speak much of his "outlaw" days due to the many who still wanted him dead. He worked for the highway department in Eastland and wrote book reports and book reviews for students at the University of Texas.



ANIMAL CONTROL

The City of Eastland adopted various animal related ordinances over the years.

It shall be unlawful for any dog or other animal possessed, kept or harbored, other than a cat, to run at large.

It shall be unlawful to harbor or keep more than four dogs or four cats, or any combination of cats and dogs when the total exceeds four such animals over the age of ten weeks except in an animal pound, clinic, hospital or kennel.

Except as otherwise provided by board rule, the owner of a dog or cat shall have the animal vaccinated against rabies by the time the animal is four months of age and at regular intervals thereafter as prescribed by board rule.

Non-domesticated, "wild", animals are not permitted within the city.

Livestock, i.e. horses, cows, sheep and goats are permitted only within Ag Open zoned areas. Swine of any type are not permitted within the city.

The City of Eastland owns and operates an Animal Control Facility

where running at large, unclaimed or quarantined animals are kept. A new facility was constructed and opened in 2014.

A Foster Program is available and many animals are adopted through the facility. Unfortunately not all animals are so lucky and the city does have to euthanize many animals each year. You can help the Eastland Animal Control Department by seeing to it your pets are vaccinated, spayed or neutered and remain on your property either behind a fence, pet enclosure or on a leash.

Two Animal Control Officers (ACO) one full time and one part time, working through the Eastland Police Department, patrol the streets answering calls from citizens of stray dogs, cats and various wild animals.

To contact the ACO about a pet adoption please call 254-629-1700.



FOR ANIMAL ISSUES:

EMERGENCY - 911

Non-Emergency - 254-629-1728

HELP CONTROL THE PET POPULATION BY HAVING YOUR PETS SPAYED OR NEUTERED.

STREET DEPARTMENT

The City constructs and maintains city-owned streets throughout the majority of the City excluding East and West Main, and North and South Seaman. These are maintained by the State of Texas Department of Transportation (TxDOT).

An ongoing street repair, replacement, upgrade program is scheduled for each year during the spring and summer months based on the current temperatures.

PARKS

The City of Eastland Parks Department maintains the main City Park, the Eastland City Cemetery, the Six Flags Park, Friendship Park, as well as the city-owned baseball complex and other areas of the city. This department works hard year round, but



especially during the spring and summer months to keep these areas looking nice for our residents and visitors.

The City not only has the City Park, but the Six Flags Park



located on the west end of town, the baseball park complex next to Siebert Elementary, Ringling and Friendship Parks.

Ringling Park is located north of the city on County Road 536, and provides a natural and rugged setting for hiking, fishing, and camping. This property was originally owned by famous circus king, John Ringling, and others.

Friendship Park was developed by the Men's Fellowship Class of the First Christian Church during the time of segregation. This small park served the African-American community for many years. It is located along the North Fork of the Leon River and North Seaman Street, the park offers picnic tables, bbq pit, swings, restrooms.

Eastland Historic Preservation

Preserving the past for the future

In 2008 the City of Eastland began a process to help preserve the historic value of the city for present and future generations. Following on the heels of prior renovations to the Connellee Hotel, Majestic Theater and the Rotary Park (now the Six Flags Park), the City saw the need to develop a program to continue preserving the history and historic structures located not only in the downtown area, but throughout the city.

The process began with the appointment of an advisory committee who researched and developed a Historic Preservation Ordinance to add to the City's current zoning ordinance. Ordinance #737 was approved on final reading in July 2008.

The City Commission then began seeking out five individuals with a common interest in preserving the historic values of the city. The first Eastland Historic Preservation Board (EHP) was appointed in March of 2009 and consisted of Dean Vernon, Ed Allcorn, Anne Zoellick, Terry Simmons and Jeanie Griffin. Eastland Planning & Zoning Official Bill Dolen sat as an ex officio member.

The EHP Board is charged by Ordinance #737 with a set of goals and a purpose to protect, enhance and perpetuate landmarks and a district of historical and cultural importance and significance necessary to promote the economic, cultural, educational and general welfare of the public.

The board set to work researching and developing a Historic District Overlay setting the boundaries of a downtown historic district. The board also, with the assistance of Jamie Smith Mulholland, architect and former Eastlander, developed a set of Historic District Design Guidelines to assist with construction work to property within the designated district. The Guidelines also include an Application for a Downtown Development Grant.

In 2009, the Eastland Historic Preservation Board, on behalf of the City, applied to the Texas Historical Commission for their Visionaries in Preservation Program (VIP). In November of that year the city was selected as one of three VIP communities for 2010. Following monthly meetings/workshops beginning in January 2010, THC officials formally presented the City with a VIP Action Plan at a September reception in the lobby of the historic Connellee Hotel.

The Eastland Historic Preservation Board meets monthly on the third Wednesday of each month in the Commission Chambers at the Eastland City Hall, 113 E. Commerce. For more information contact Terry Simmons at 254-629-8321.



Planning & Zoning Commission

The Planning & Zoning Commission is an advisory board to the City Commission and makes recommendations regarding the subdivision of land, amendments to the zoning map and zoning ordinance and updates the City's Comprehensive Plan.

Meetings: Held the first Tuesday of each month, as necessary, at 6:00 p.m.

Appointment:

Consists of five (5) citizens of the City of Eastland who serve three-year terms. Appointments are made from a list of applicants by the Mayor and approved by the City Commission.

Board of Adjustment

The Board of Adjustment (BOA) hears appeals for variances, where there is an alleged error of the law in any order, requirement, decision or determination made by the Planning and Zoning Official in the enforcement of the Zoning Ordinance.

Meetings: Are held on the first Monday of the month, as needed, at 6 p.m.

Appointment:

Consists of five (5) regular members and four (4) alternate members who serve two-year terms. Appointments are made from a list of applicants by the Mayor and approved by the City Commission.

Applications available at City Hall for anyone interested in serving on a City board.

What is a variance?

It is the intent of the Zoning Ordinance to use variations only to modify the application of the Zoning Ordinance to achieve parity among properties similarly located and classified.

Specifically, it is to be used to overcome some exceptional physical condition which poses practical difficulty or particular hardship in such a way as to prevent an owner from reasonable use of their property as intended by the Zoning Ordinance. Such practical difficulty or hardship must be clearly exhibited and must be as a result of an external influence; it may not be self-imposed.

CODE COMPLIANCE

UNLAWFUL PROPERTY NUISANCE

It is unlawful for any person owning, leasing, renting, occupying or having charge or possession of any property in the city to maintain or to allow to be maintained such property in such manner that any of the following conditions are found to exist thereon, except as may be allowed by this Code:

(1) The following, if visible from a public street:

- a. The accumulation of litter or debris;
- b. Overflowing trash, garbage or refuse cans or bins, boxes or other such containers stored in the front or side yards;
- c. Packing boxes, lumber, junk, trash, salvage materials or other debris.

(2) Nuisances dangerous to children and visible from a public street including abandoned, broken or neglected equipment, machinery, refrigerators, freezers, hazardous pools or ponds and excavations;

(3) Broken or discarded furniture, household equipment and furnishings or shopping carts stored on the property for unreasonable periods and visible from a public street;

(4) Overgrown vegetation likely to harbor rats or vermin, dead or hazardous trees, noxious or invasive weeds and plants, or other vegetation constituting unsightly appearance, dangerous to public safety and welfare or detrimental to neighboring properties or property values and visible from a public street;

(5) Graffiti or other words, letters or drawings which remain on the exterior of any building or fence for an unreasonable period and are visible from a public street; and

(6) Boats, trailers, vehicle parts or other articles of personal property which are abandoned or left in a state of partial construction or repair for an

unreasonable period of time in front yards, side yards, driveways, sidewalks or walkways and are visible from a public street.



JUNKED MOTOR VEHICLES



Junked vehicle shall mean a vehicle that is self-propelled and inoperative and:

- (1) Does not have lawfully attached to it:
 - a. An unexpired license plate;
- or
- (2) Is wrecked, dismantled or

partially dismantled, or discarded; or (3) Has remained inoperative for more than 30 consecutive days on private property or more than 72 hours on public property.

PARKING IN YARD

No off-street parking shall be permitted in the required front or exterior side yard of any single family or multi family residence.



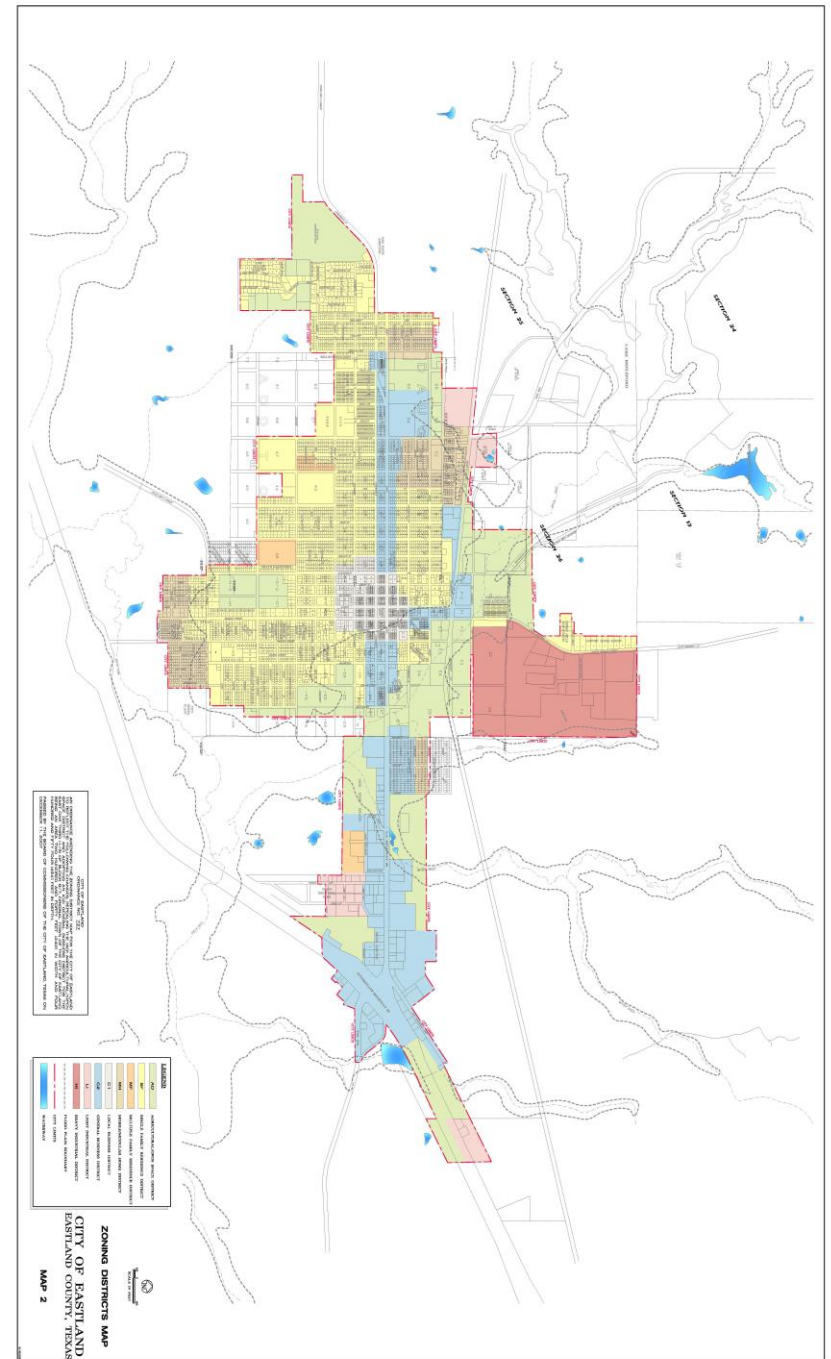
OFF PREMISE SIGNS

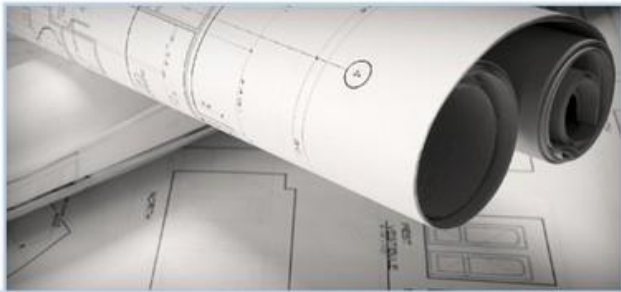
Off Premise signs are not permitted within the City of Eastland.



No signs allowed in public street rights-of-way, public easements, alleys or upon any utility pole.

For garage sale sign placement see Garage Sales on page 19.





PLANNING & ZONING

The City of Eastland first developed and adopted the first Planning & Zoning Ordinance in 2007. The zoning regulations and districts were made in accordance with a comprehensive plan for the promotion of the public health, safety, morals and the general welfare of its citizens. They have been designed, among other things to lessen congestion in the streets, to secure safety from fire, panic and other dangers, to provide adequate light and pure air; to avoid undue concentration of population, and to facilitate adequate provisions for transportation, water, sewerage, schools, parking areas and other public requirements.

This department handles all building and plumbing permits and inspections and assists the City Fire Marshal with Certificates of Occupancy for commercial buildings.

The complete Zoning Ordinance as well as a full size Zoning Map can be found online at www.cityofeastland.com.



DEPOSITING, DUMPING OR BURNING



It shall be unlawful for any person to burn, dump, place, deposit or throw, or otherwise dispose of or permit or cause to be burned, dumped, placed, deposited or thrown, any garbage, trash, brush, broken glass, bottles, loose waste or refuse of any kind on public or private property in the city, unless the same has been deposited in accordance with

the garbage collection provisions of this Code. This includes the blowing of cut grass/vegetation into the street or upon a sidewalk or gutter.

A violation of this section when committed against or upon public property or property, owned or occupied by another, shall constitute a trespass on such property.

WEEDS & VEGETATION

It is unlawful for any person owning, claiming, occupying or having supervision or control of any real property within the city limits or within 150 feet thereof to permit weeds, grass, brush or any objectionable or unsightly vegetation to grow or accumulate on any such real property. It shall be the duty of such person to keep the area from the line of his or her property to the street, road or parkway, clean and free of all such weeds, grass, brush or objectionable or unsightly vegetation.

"Objectionable or unsightly vegetation" includes all weeds and grasses which exceed 12 inches in height upon any undeveloped tract or acreage, or exceed six (6) inches in height within any developed areas.



TRUCK ROUTES ESTABLISHED

- (1) Burkett Street from south city limits to South Seaman Street.
- (2) Seaman Street from Burkett Street to north city limits.
- (3) Main Street from east city limits to 1600 block West Main Street.
- (4) Commerce Street from its intersection with 1600 block West Main Street to west city limits.
- (5) College Avenue from Main Street to northwest city limits.

*Truck Route Maps are available at City Hall



TRACTOR/TRAILER PARKING

No truck tractor rig may park upon any residential street or property within the city.

Trailers may park no longer than 30 minutes on any street within the city unless loading/unloading.

GARAGE SALES

(a) It shall be unlawful for any person to conduct or participate in more than four garage sales within the city limits in any calendar year.

(b) It shall be unlawful for any person to conduct or participate in more than one garage sale within the city limits in any calendar quarter.

(c) It shall be unlawful for any person to conduct or participate in any garage sale that is conducted for a period of more than four consecutive days. Any garage sale which has commenced shall be a garage sale for the purpose of this section, regardless of the length thereof.

(d) It shall be unlawful for any person to display or store any merchandise held for sale at a garage sale in any structure designed for parking vehicles or outside of any enclosed structure, unless a garage sale has been commenced within the terms of this article.

(e) It shall be unlawful for any person to advertise a garage sale more than seven days immediately prior to the first day of such garage sale or more than one day after the last day of such garage sale.

NOTE: No garage sale signs may be placed upon any utility pole, rock, tree or building. Signs may only be placed on private property with the owner's permission. Signs may not be placed on easement or right of way. Signs must be no less than 15 feet from curb.

The City of Eastland has erected two bulletin board type signs for Garage Sale signs within the city. One sign is located on West Commerce Street just west of the Six Flags Park, the other sign is located between Bryans Auto/Computers/Signs and Russell's Auto/Car Wash on East Main. Garage Sales may also be listed free of charge on the city website at: www.cityofeastland.com/garagesales



FENCES, STRUCTURES IN EASEMENTS AND ADJACENT TO PUBLIC PROPERTY

(a) Permission to build a fence or structure upon a utility easement does not remove the obligation of the owner of said fence or structure to remove the structure or fence upon demand of the utility company.

Removal of the fence and any rebuilding of the fence shall be the responsibility of the owner of said fence and at the owner's expense.

(b) Fences or structures shall be designed, constructed and maintained so as not to interfere with utility lines.

(c) No fence or structure shall be located so as to obstruct the vision or sight distance of motor vehicle operators or pedestrians at any street intersection, crossing, ingress or egress of public or private property or other point of traffic concentrations.

(1) Fence shall not exceed 48 inches in height within 24 feet of a front yard property line or exterior side yard which access a public way, and shall maintain a clear space three feet above the grade level. Post located within this area shall not exceed a diameter of eight inches.

(2) Fences or structures located on a corner lot and situated within 30 feet of the intersection of two street edges, street to alley edges or curb lines shall maintain a clear space three feet above the grade level. Post located within this area shall not exceed a diameter of eight inches.

(d) It shall be unlawful to erect, maintain, suffer or permit any fence or structure on any corner lot in such a manner as to create a traffic hazard. Failure of the owner, agent or occupant to remove such obstruction within ten days after receipt of such notice shall constitute a violation of the zoning ordinance.

*** Under this ordinance swimming pools are considered a structure.**

PERMITS ARE REQUIRED

**FOR ANY FENCE OR STRUCTURE CONSTRUCTION, OR ROOFING
TO BE PERFORMED AT ANY PROPERTY ADDRESS,
COMMERCIAL or RESIDENTIAL.**



UNSANITARY CONDITIONS ON PROPERTY

It shall be unlawful for any person or entity owning or having supervision or control (including a building contractor) of any lot, tract, parcel of land or portion thereof,

whether occupied or unoccupied, improved or unimproved, within the corporate limits of the city to permit any of the following unsanitary conditions to exist on, or emanate from, any such lot, tract or parcel of land:

(1) Stagnant water or any collection of water that may allow the breeding of insects, exposed animal carcasses,

or any open drain, sewer, or cesspool;

(2) Any waste products, offal, polluting material, spent chemicals, liquors, brines, garbage, rubbish, refuse, sewage, tires, or other waste of any kind that is stored, deposited or disposed of in a manner that may cause the pollution of the surrounding land, the contamination of groundwater or surface water or the breeding of insects or rodents;

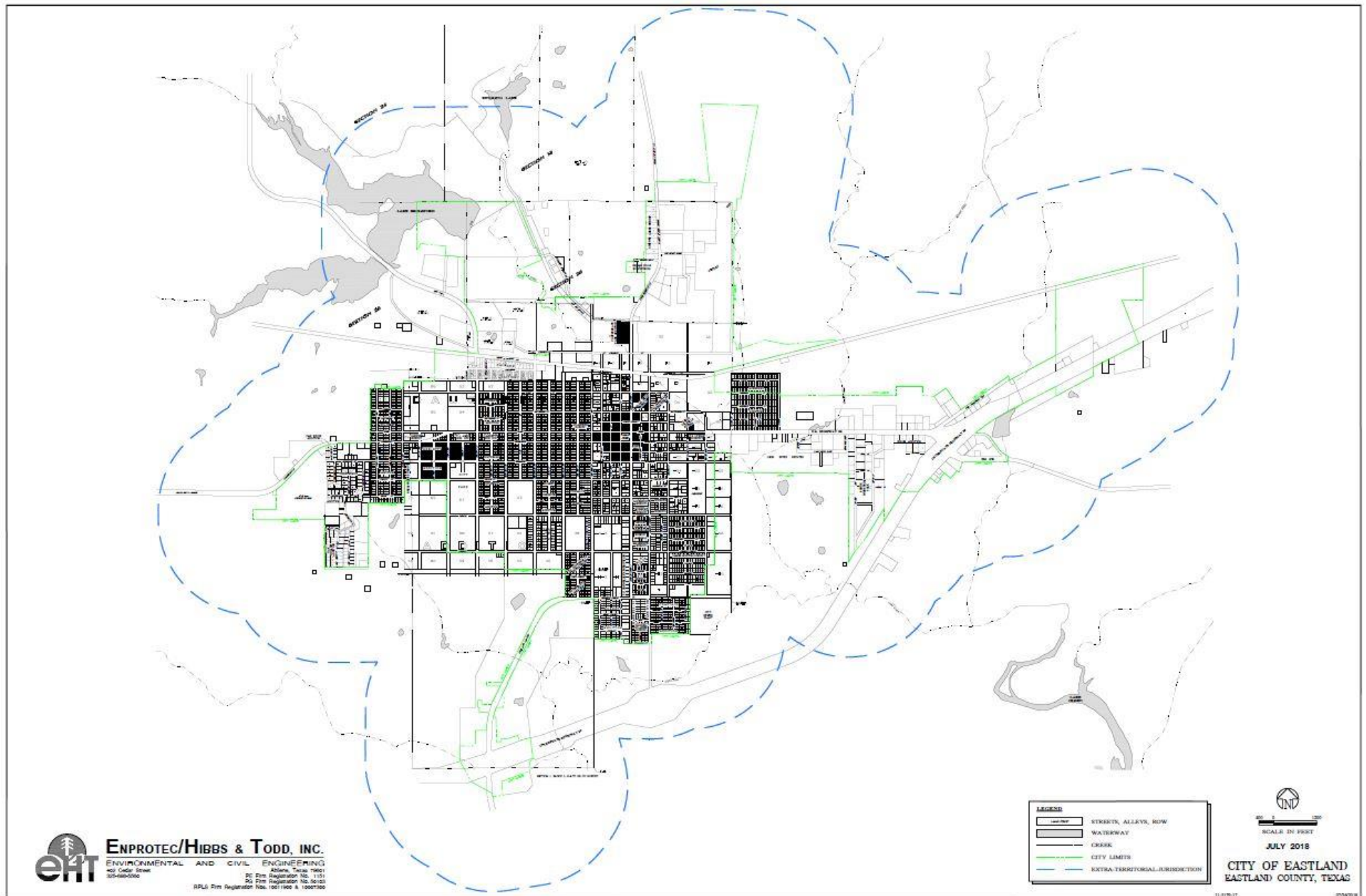
(3) Any waste products, offal, polluting material, spent chemicals, liquors, brines, garbage, rubbish, refuse, sewage, tires, or other waste of any kind that is accumulating in, being discharged into or flowing into or on any gutter, street, sidewalk, parkway, driveway, curb, alley or any other public property of the city, or in or on any lot, vacant or occupied, driveway or other private property in the city; or

(4) Any garbage or waste receptacle or container that is in an unsanitary condition.

This section also applies to all commercial dealers for tires, who keep on their property used or discarded tires. For Texas Commission on Environmental Quality (TCEQ) rules and regulations regarding the storage and managing of used and scrap tires, visit:

<http://www.tceq.state.tx.us/compliance/tires/>





For online interactive version go to: <https://cityofeastland.com/residents/city-maps.php>